



AILG

Association of Irish Local Government
Aontas Rialtas Áitiúil na hÉireann

AILG Members Workshop

Local Authority

Fire Services

February 2016



Dave Carroll, Chief Fire Officer, Tipperary County Council

Local Authority Fire Services

- Introduction
- Structure
- Legislation
- Funding
- Fatalities
- Fire Service Operations
- Fire Safety & Prevention
- Community Fire Safety
- Major Emergency Management
- Health & Safety
- Reserved Functions
- Questions?

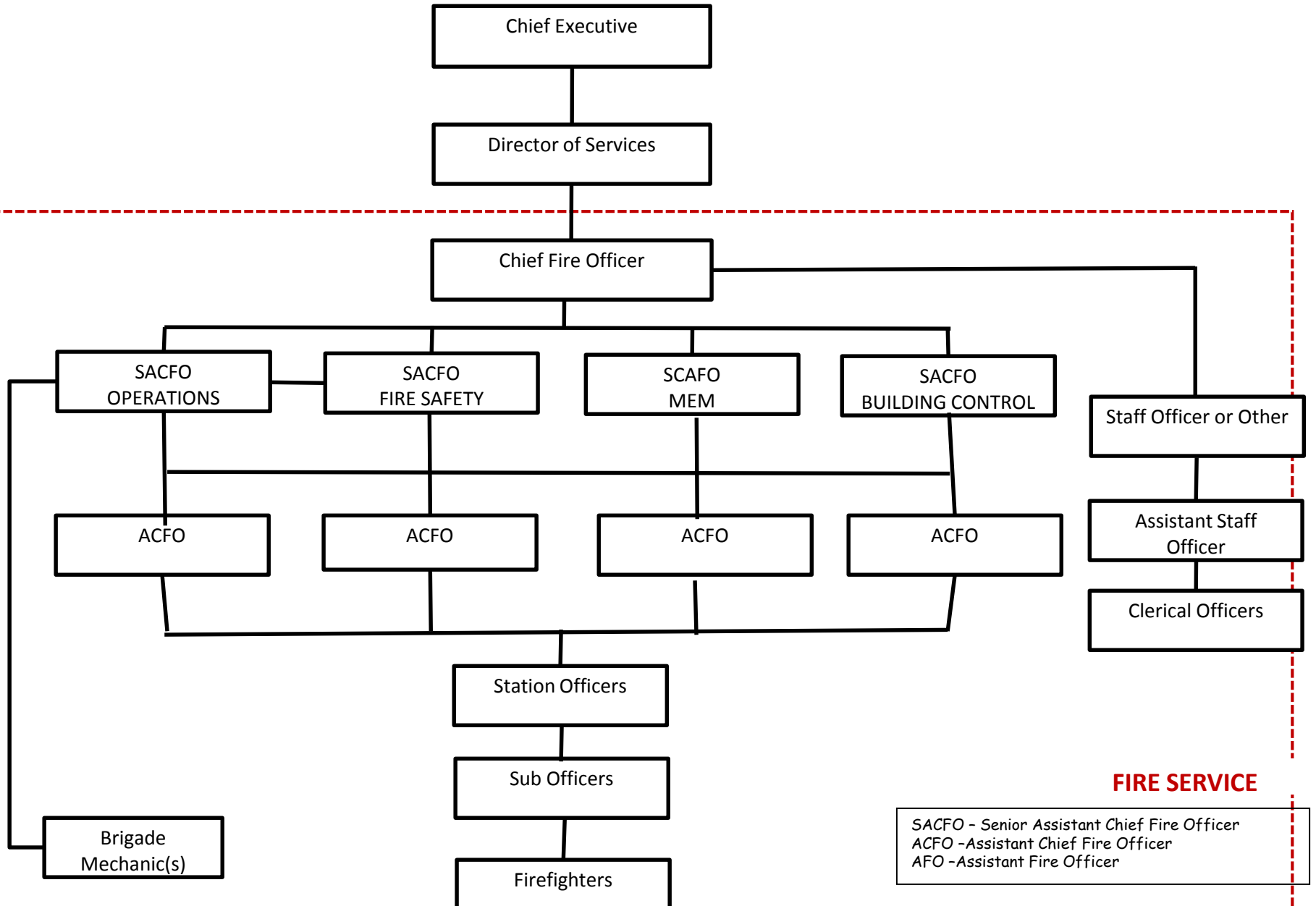


STRUCTURE

- Fire Services delivered through 27 Service Delivery Units currently.
- 217 Fire Stations, 600 Fire Appliances and 3450 Staff.
 - Fulltime vs Retained
- The National Directorate for Fire & Emergency Management created in Dept. in 2009.
 - Responsible for national guidance, standards etc.



TYPICAL COUNTY STRUCTURE



LEGISLATION 1

- Fire Services Act 1981 & 2003
 - Sets responsibilities (Section 10)
 - Training (Section 15)
 - Obligations with regard to Fire Safety (Section 18)
 - Potentially Dangerous Building (Section 19)
 - Fire Safety Notices and Closure Notices (Section 20)
 - Powers of Inspection (Section 22)
 - Fire and Emergency Operations Plan (Section 26)
 - Ancillary Powers (Section 28)
 - False alarms (Section 30)



LEGISLATION 2

- Building Control Acts 1990 & 2007
 - Building Regulations Parts A - M
 - Building Control Regulations
 - **Fire Safety Certificates**
 - Disability Access Certificates
 - Commencement Notices
 - BCMS
 - Assigned Certifier etc only since 1st March 2014
 - Certificates of Completion
 - Construction Products Directive

Other Legislation

- Explosives, Dangerous Substances, Licencing, SEVESO



FUNDING

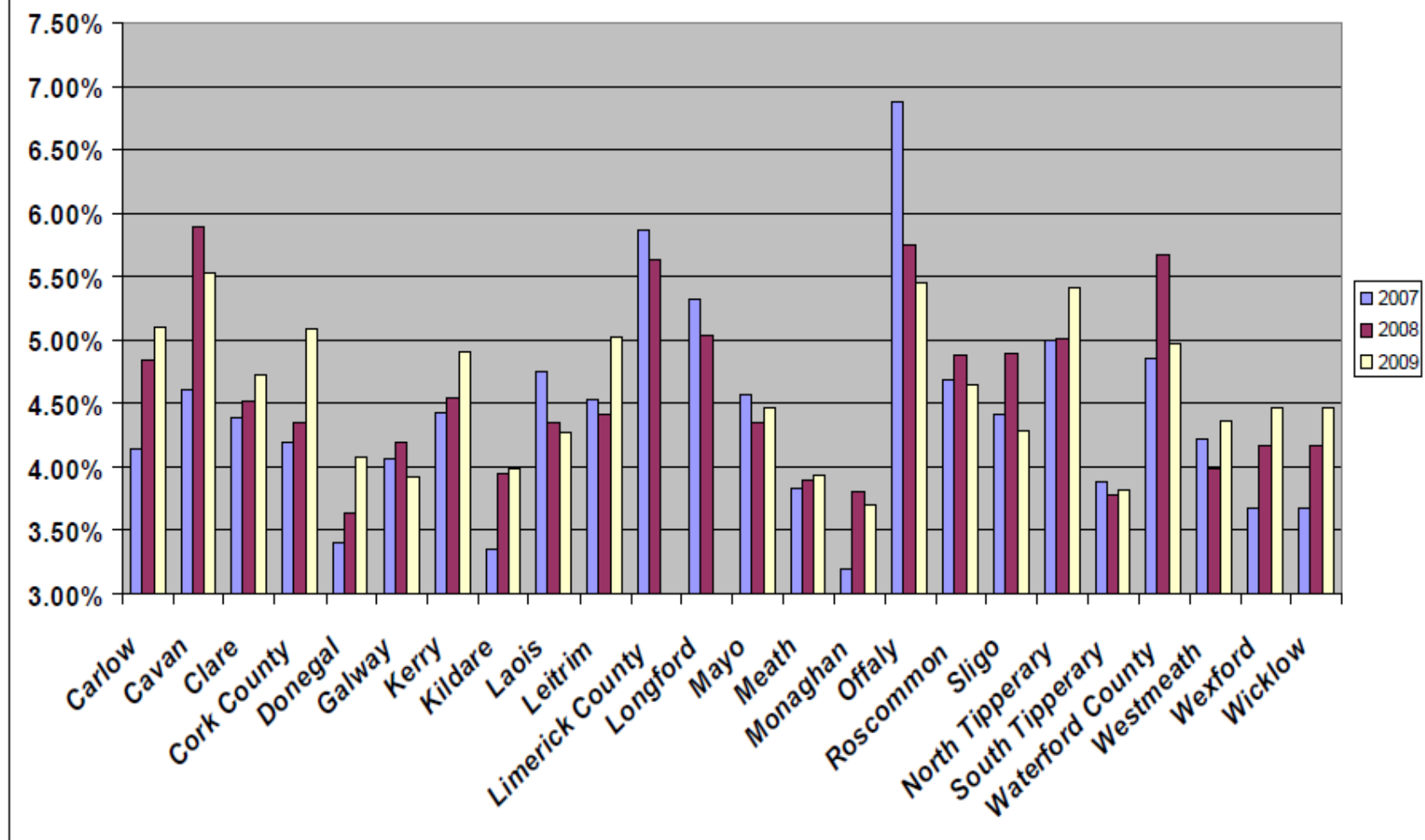
- Capital funding from Dept. for Fire Stations, Fire Appliances, ICT Infrastructure, Equipment etc.
- Revenue Budget in Local Authority
- Average Cost Per Head Population (NOAC 2014)
 - Retained = €43
 - Fulltime = €93
- Income
 - Fire Charges
 - Various fees





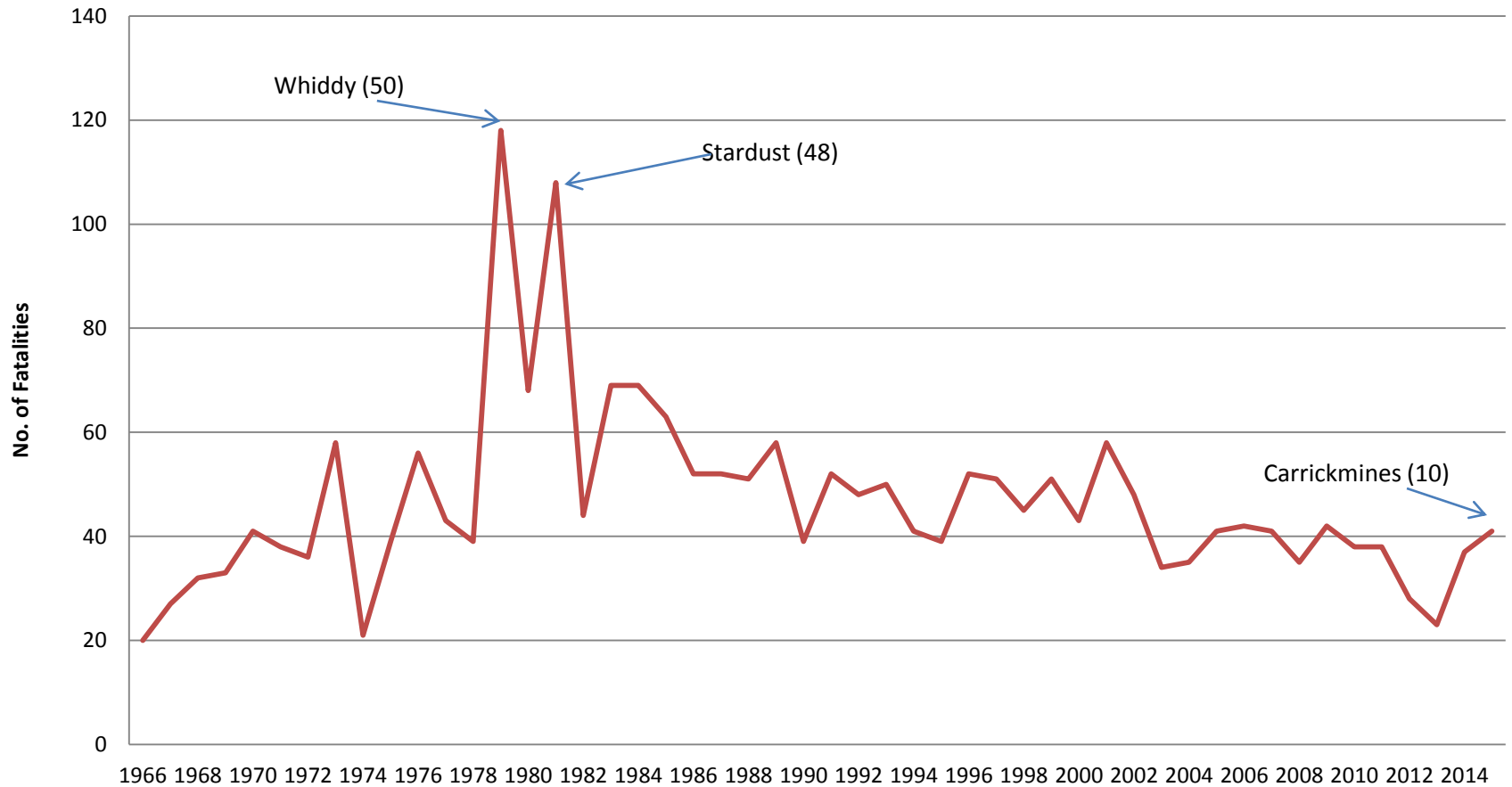
€400,000

Fire Service Funding as % of Local Authority Revenue Spend



The retained services provide a model of service delivery where to a substantial degree a contingent rather than continuous capability is required. The majority of rural authorities spend between € 2 million and € 4.5 million per annum on operating the fire service. This equates to arrange from about 4% to 6% of total local authority spend

No. of Fatalities in Fires 1966 -2015



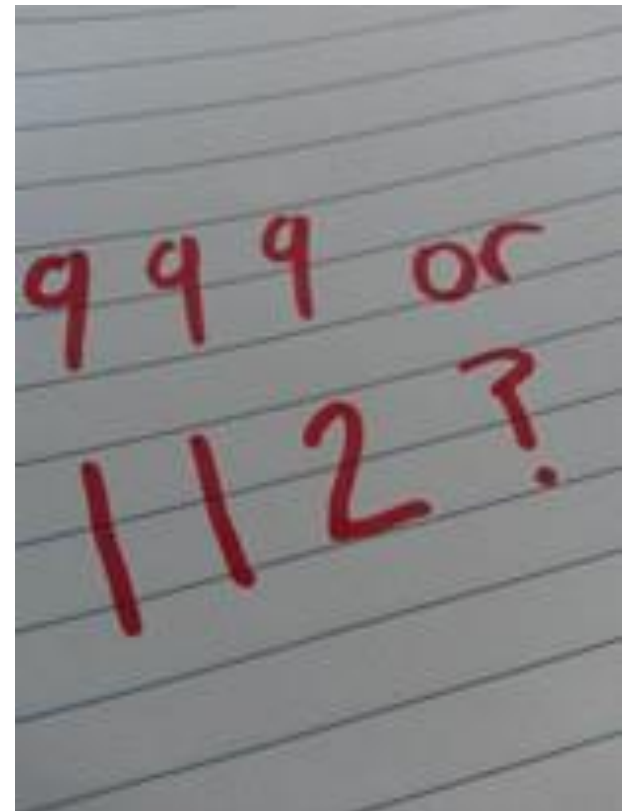
OPERATIONAL RESPONSE

- Fires (inc. False Alarms)
- Road Traffic Collisions (RTCs)
- Hazardous Materials
- Swiftwater Rescue (not everywhere)
- General Rescues
- Severe Weather
 - Flooding
 - Trees down



MOBILISATION

- 3 Regional Control Centres
- Pre-Determined Attendances (PDAs)
- PDA is dependent on Location and Incident Type
- Rostered Senior Fire Officers
- Rollout of TETRA

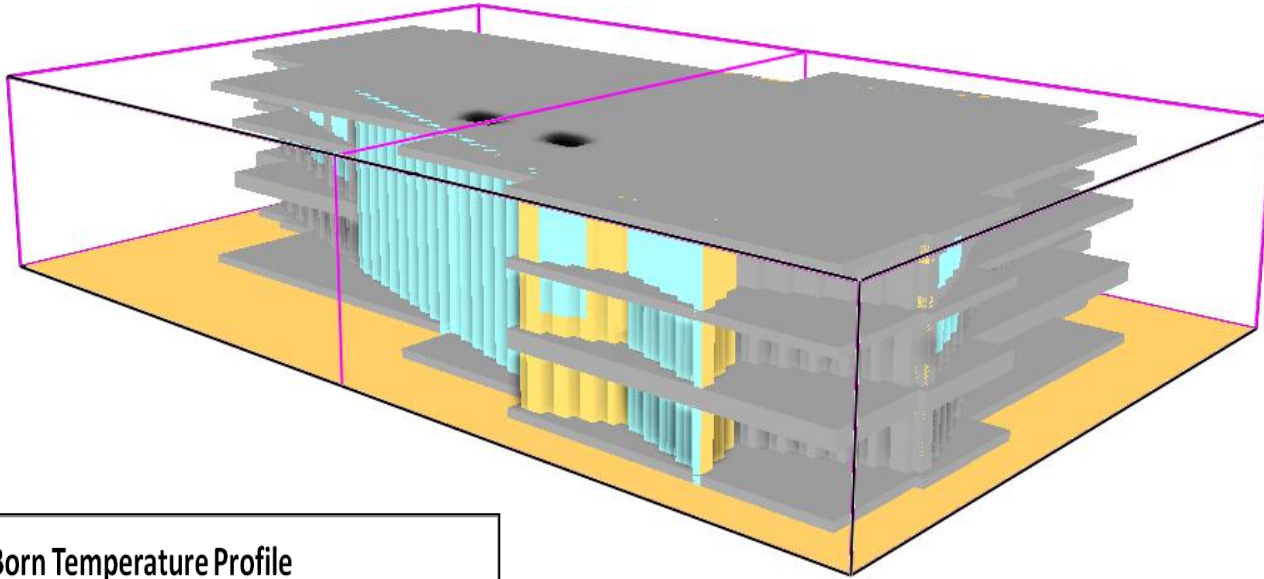


Fire Safety/Prevention & Building Control

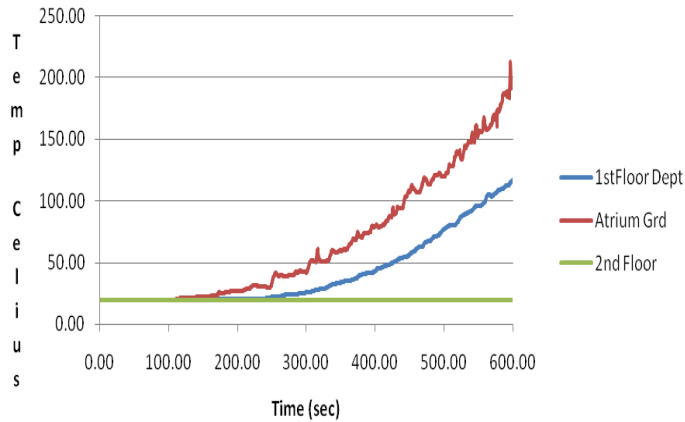
- **Assessment of Fire Safety Certificate Applications**
 - Standard
 - Seven Day Notice
 - Revised
 - Regularised
- **Licensing of Premises**
- **Planning Advice**
- **Disability Access Certificates**
- **Commencement Notices - BCMS**
- **During Construction Inspections**
- **Fire Safety Inspections (High risk / complaints)**
- **During Performance Inspections**
- **Dangerous Substances**
- **Events**
- **Market Surveillance – CE Marking**



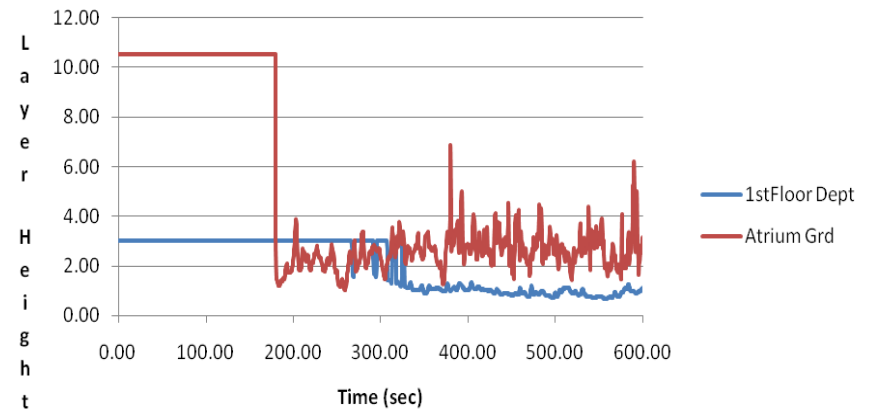
Fire Engineering



Born Temperature Profile Fast Growth



Born Smoke Layer Height Profile Fast Growth



Community Fire Safety

- Increase Smoke Alarm Ownership and Testing
- Fire Safety Talks / Demonstrations
- Smoke Detector Scheme
- Primary Schools Programme (3rd class)
- Home Fire Safety Visits
- Wildfire Campaign
- Fire Safety Week
- Community Events
- Traveller Accommodation
Fire Safety Review 2015



Major Emergency Management



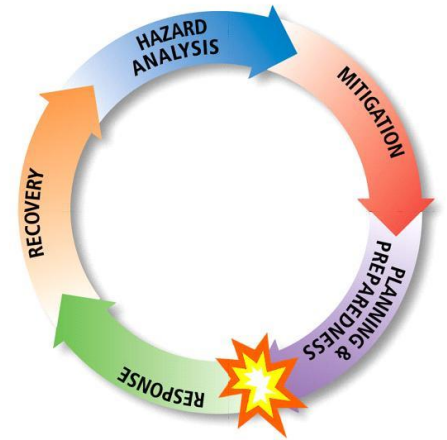
A FRAMEWORK FOR MAJOR EMERGENCY MANAGEMENT

A Framework enabling An Garda Síochána, the Health Services Executive and Local Authorities to prepare for and make a co-ordinated response to major emergencies resulting from events such as fires, transport accidents, hazardous substances incidents and...



Major Emergency Management

- Major Emergency Plan (MEP)
- Major Emergency Management Committee (MEMC)
- Sub – Plans
 - Flood response
 - Severe weather
 - Section Plans
- External Emergency Plans SEVESO Site
- Mass Fatalities Capability
- National/Regional Coordination



Health and Safety



Limavady 2003 (1)

Bethnal Green 2004 (2)

Harrow Court 2005 (2)

Foynes 2007 (1)

Bray 2007 (2)

Warickshire 2010 (4)

Shirley Towers 2010 (2)



OHSAS 18001?



Trained

PPE

Tested

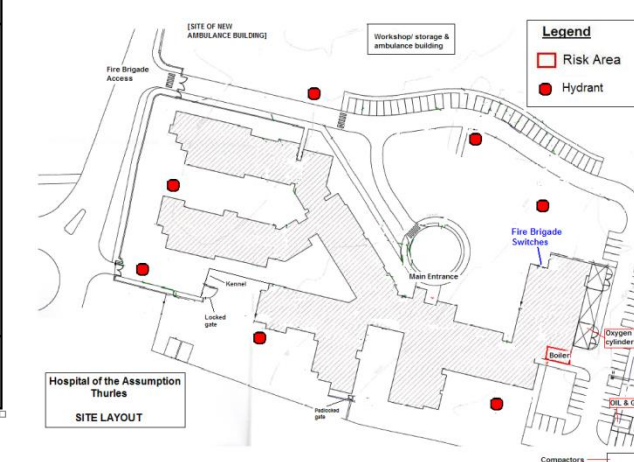
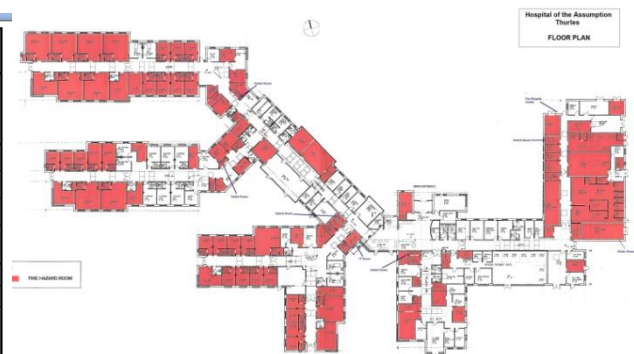
Safe System of Work

Supervised

Risk Assessed

Pre-Incident Planning

PRE-FIRE PLAN NO: TN12-02		RISK CARD NORTH TIPPERARY FIRE & RESCUE SERVICE		ISSUE DATE: 15/08/2011	REVISION: 1								
Station: Thurles		Premises Details		Priorities:									
Co-ordinate Location 52.68596; -7.82425		Name: Hospital of the Assumption	Ward Units A, B, and C.										
Required Attendance Water Tender x 4 Water Tanker Hydraulic Platform		Address: Thurles Co. Tipperary	Occupancy										
			Total	84	72	72							
		Trade/Business: Community Hospital	Non-ambulant	53	53								
			Evacuation Staff	40	10-12								
Contact Details			Hazard Details										
Name	Title	Landline	Mobile	Hazard (UN number)	Location	Quantity	Action						
Michael Fogarty	Buildings Officer	0504-27740	086-2772556	LPG (1075)	Tank to rear supplying kitchen	15000L	2YE – Gas detection in kitchen cuts off supply						
Switch	-	0504-27700	-	Oil (1202)	Tank supplying boilers & generator	27,000L	3Y						
				Medical Oxygen (1072)	Cylinder storage in rear yard supplied to each unit	12 x 6800L cylinders connected	2S – Isolate in each unit as required.						
Description of premises			Operational Notes:										
Construction:	Concrete Blockwork		<ul style="list-style-type: none"> Fire alarm panel located in main reception. Repeater panels are located in each unit. Ward units open 24 hours. Remainder of hospital closes at 10 p.m. Main door is locked electronically at night but can be prized open if necessary. Only isolate oxygen supply if not in use by patients. Nursing staff in duty in each unit at night & can be contacted by the main door intercom. Other building located on site contains workshop, storage and ambulance centre. Clinical Waste located to rear of building in services area. 2 compactors for waste located beside oil and gas tanks. Bed evacuation required for the majority of residents. Consult with staff before disconnecting any leads or tubes from beds. Each unit has an individual switch room (see plan). Pet dog on premises, sleeps in kennel to rear. 										
Ground floor area:	4247 m ²		<table border="1"> <tr> <td>Night Watchman</td> <td>Y</td> </tr> <tr> <td>Guard Dog</td> <td>N</td> </tr> <tr> <td>Handler</td> <td>N</td> </tr> </table>					Night Watchman	Y	Guard Dog	N	Handler	N
Night Watchman	Y												
Guard Dog	N												
Handler	N												
No. of floors/Height:	1/2.5-7m												
Roof type:	Timber/Concrete Tiles												
Fixed fire protection:	Suppression over 3 boilers, and over cookers & fryers in the kitchen.												
Access points:	Vehicle access to all but rear of building. Access points to full perimeter of building.												
Heating system:	Oil	Location: Tanks to rear, supplied to boiler house & generator.											
Electricity supply:	Mains & generator	Location: FB switch outside generator room											
Water supply:	7 hydrants on site.												
Other:	LPG supplied to kitchen. Detection in kitchen & boiler house.												



DISCLAIMER: The information contained in this Risk Card form is based on information provided by the occupier of the premises and gathered through past inspections and as such the accuracy of the information may change over time.

Training Courses



- Recruit Induction
- Manual Handling
- Breathing Apparatus
- Compartment Fire Behaviour
- Working at Height
- Water Safety Awareness
- Incident Command
- Aerial Appliance
- Hazardous Materials
- Major Emergency Management
- Emergency Medical First Responder
- Emergency Fire Appliance Driver
- Water Rescue
- Wildland Fire Fighting
- Heavy Transport Rescue
- Abrasive Wheels
- Auditor (OHSAS & ISO 9001)
- Pump Operator
- Confined Space
- Winch
- Safety Management
- Line Manager
- Fire Engineering
- CISM
- CAFS

RESERVED FUNCTIONS

Section 26 of the Fire Services Act, 1981 & 2003, states:

"Each Fire Authority which maintains a Fire Brigade shall prepare (and, as occasion requires, revise) plans for fire and emergency operations showing the provision made by it in respect of:

- Organisation*
- Fire Stations*
- Appliances*
- Equipment*
- Water supplies and extinguishing agents*
- Training*
- Operational procedure and such other matters as may be relevant for dealing with operations of an emergency nature under Section 25*

What Is A S26 Plan?

- This plan sets out current arrangements within the Fire Authority, but it also sets out strategic plans and targets for the Fire Authority for the next 5 years.
- This plan shall be reviewed from time to time as deemed appropriate, but in any case it shall be reviewed at least once every 5 years.
- **It should be noted that the above function is a reserved function under Section 26(3) of Fire Services Act 1981 & 2003.**

The Plan!

- 1. Purpose & Scope**
- 2. Executive Summary**
- 3. Organisation**
- 4. Fire Stations**
- 5. Fire Appliances**
- 6. Equipment & PPE**
- 7. Water Supplies**
- 8. Training**
- 9. Health & Safety**
- 10. Communication**
- 11. Operational Roles & Procedures**
- 12. Operational Standards**
- 13. Fire Safety**
- 14. Major Emergency Management**

