

SICAP, CFS and RAPID

Lucy Pyne, Pobal

On behalf of the Department of
Housing, Planning, Community and
Local Government



Ireland's European Structural and
Investment Funds Programmes
2014-2020

Co-funded by the Irish Government
and the European Union



EUROPEAN UNION

Investing in your future
European Social Fund



An Roinn Tithíochta, Pleanála,
Pobail agus Rialtais Áitiúil
Department of Housing, Planning,
Community and Local Government



Social Inclusion &
Community Activation
Programme

SICAP

Social Inclusion and Community Activation Programme

What is SICAP?

- National Social Inclusion and Community Activation Programme - primary social inclusion programme of Government.
- Successor to the Local and Community Development Programme.
- Tackle poverty, social exclusion and long-term unemployment through local engagement and partnership between disadvantaged individuals, community organisations and public sector agencies.
- Strong focus on community activation, social inclusion and community development - those most hardest to reach.
- Budget of €37.5m - part funded by ESF/YEI.

Vision

“To improve the life chances and opportunities of those who are marginalised in society, living in poverty or in unemployment through community development approaches, targeted supports and interagency collaboration, where the values of equality and inclusion are promoted and human rights are respected.”

Policy Context

- Reform of local government – *Putting People First*, 2012
- Establishment of LCDCs
- Strengthening the operational management, oversight and planning arrangements for local and community programmes
- Local Economic and Community Plan (LECP)



Social Inclusion & Community Activation Programme

Operating Structure

Lead Funding Department

Policy Context; Programme Development; Set National/Local Targets; Final Decision Maker in respect of Sanctions, Appeals

Department of Housing, Planning, Community and Local Government

Contracting Authority

Development of the LECP; Contract Compliance; Issue Payments; Financial Management/Reporting; Performance Monitoring; Corporate Governance; Performance Review.

Channel Funding

LCDC / Local Authority

Pobal

National Oversight

Programmatic & Operational Requirements; Performance Monitoring & Financial Management; Capacity Building.

Programme Implementer

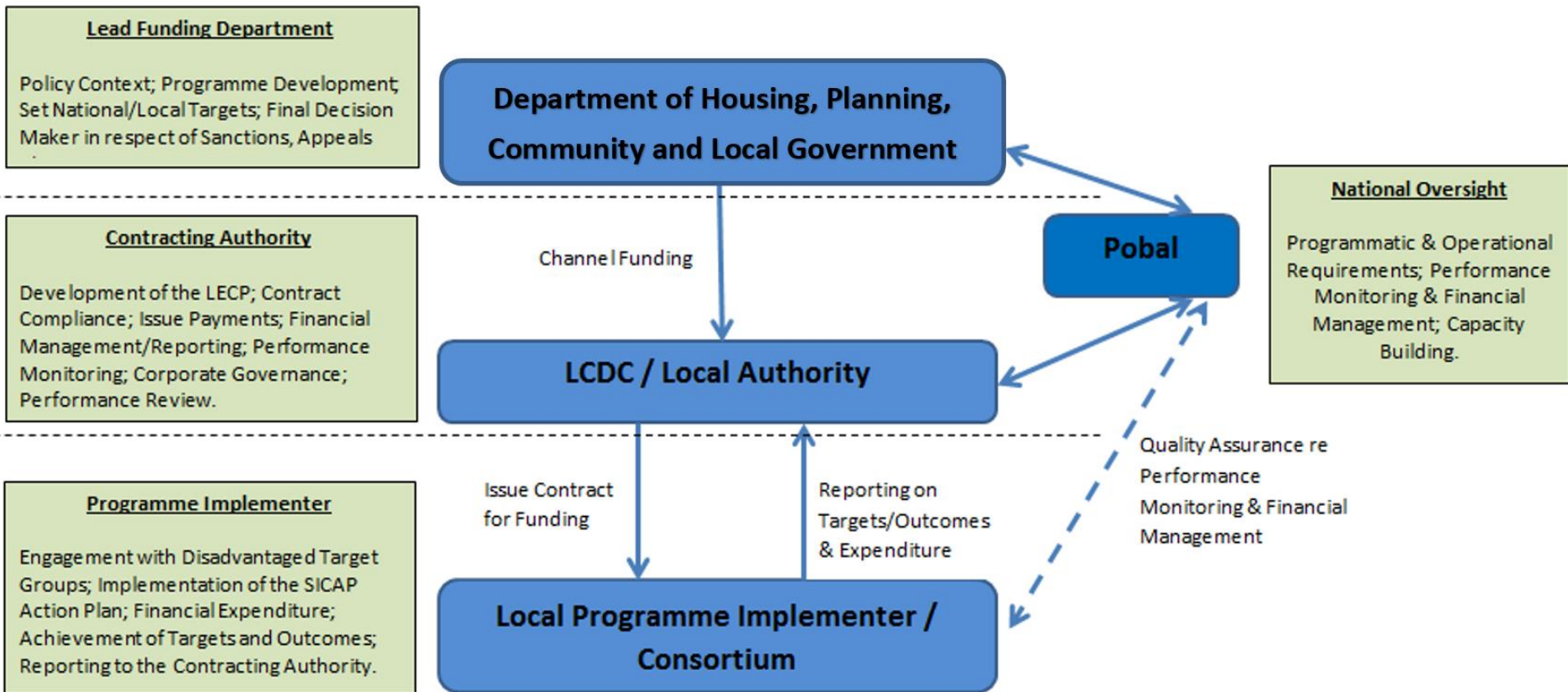
Engagement with Disadvantaged Target Groups; Implementation of the SICAP Action Plan; Financial Expenditure; Achievement of Targets and Outcomes; Reporting to the Contracting Authority.

Issue Contract for Funding

Local Programme Implementer / Consortium

Reporting on Targets/Outcomes & Expenditure

Quality Assurance re Performance Monitoring & Financial Management



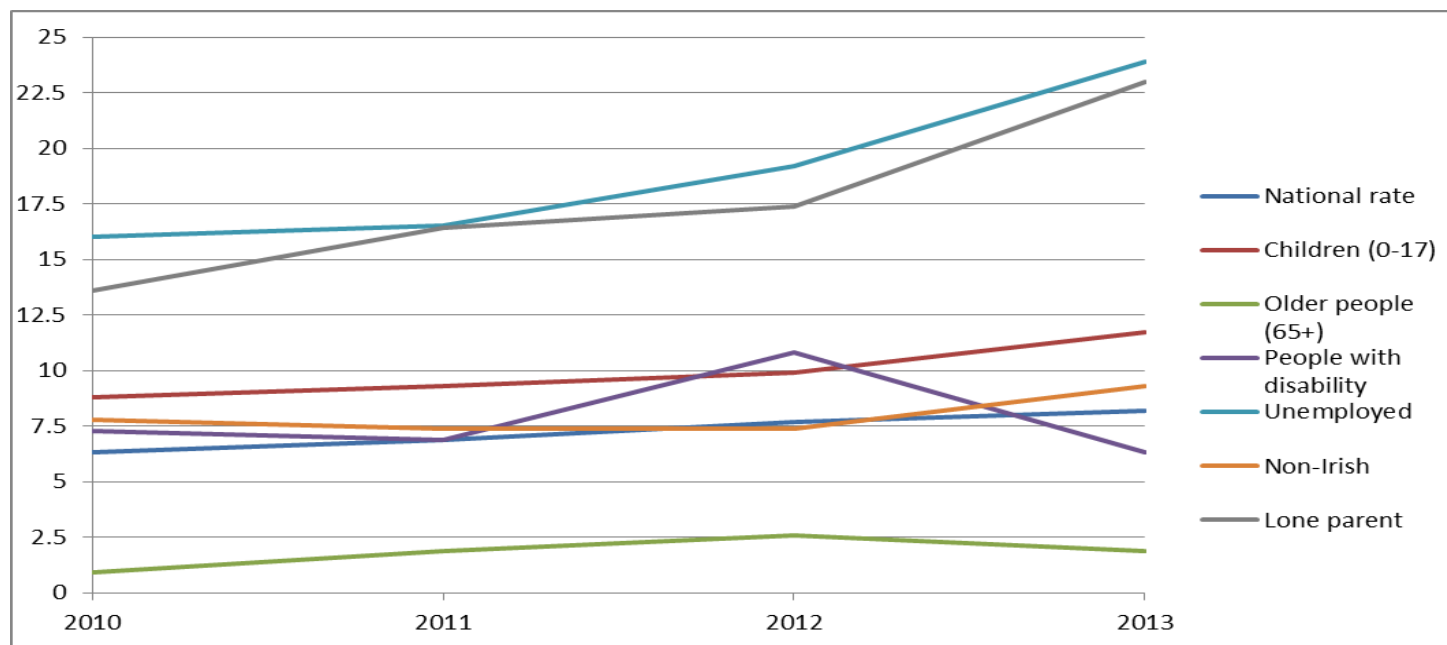
What shaped SICAP?

- 2013 Mid-Term Review of the LCDP and learning
- OECD reports and reviews e.g. Local Job Creation
- Stakeholder consultation process in 2014 - Citizen engagement
- Requirements of Youth Employment Initiative (YEI) – European Social Fund, PEIL 2014-2020
- Focus on fewer outcomes in line with local needs and national priorities
- Engage with the most difficult to reach and tackling geographic and issue based disadvantage
- Adding value to public services and value for money

Other Factors

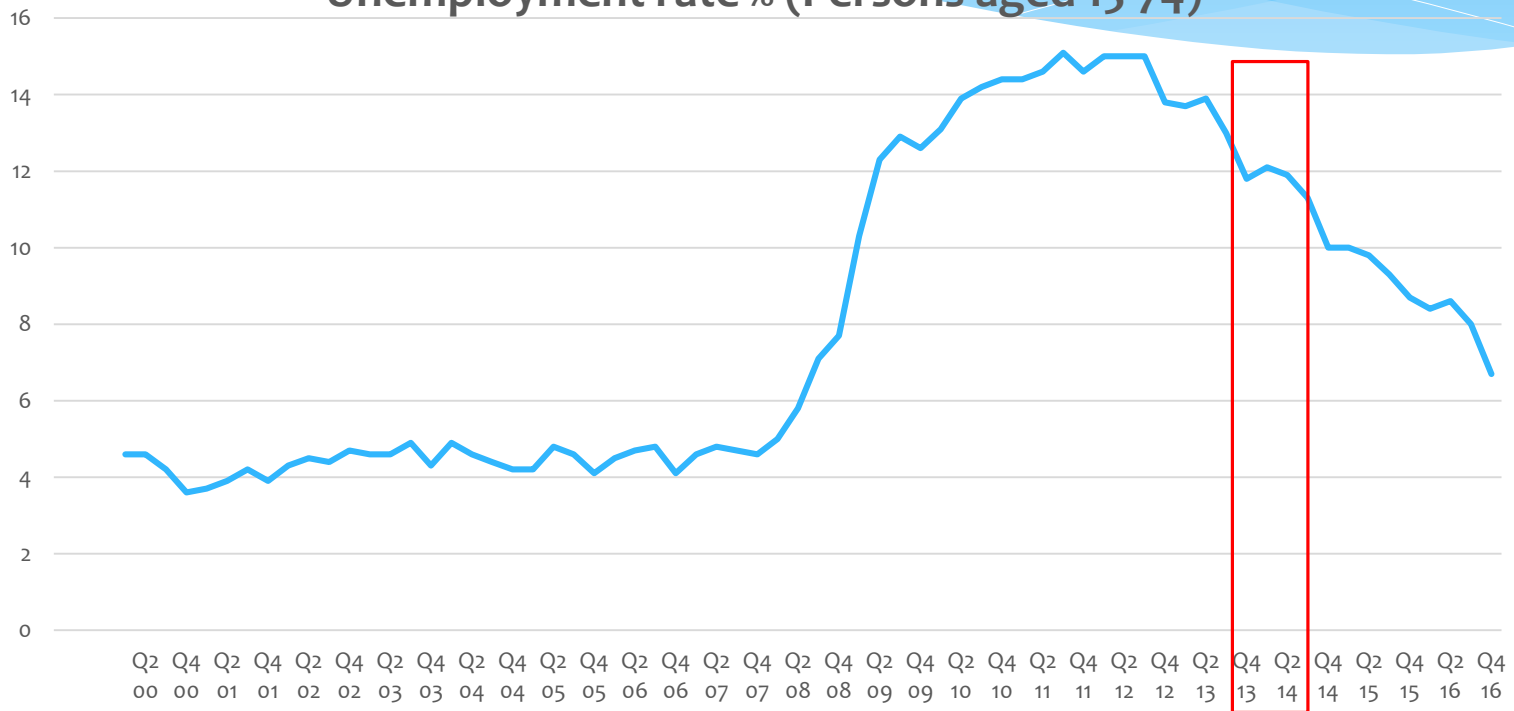
- High unemployment and youth unemployment were key driving factors
- High jobless household rate
- Consistent poverty has increased (8.2%) and remains high amongst SICAP target groups

Consistent Poverty Rates in Ireland, 2010 - 2013



Unemployment Rate

Unemployment rate % (Persons aged 15-74)



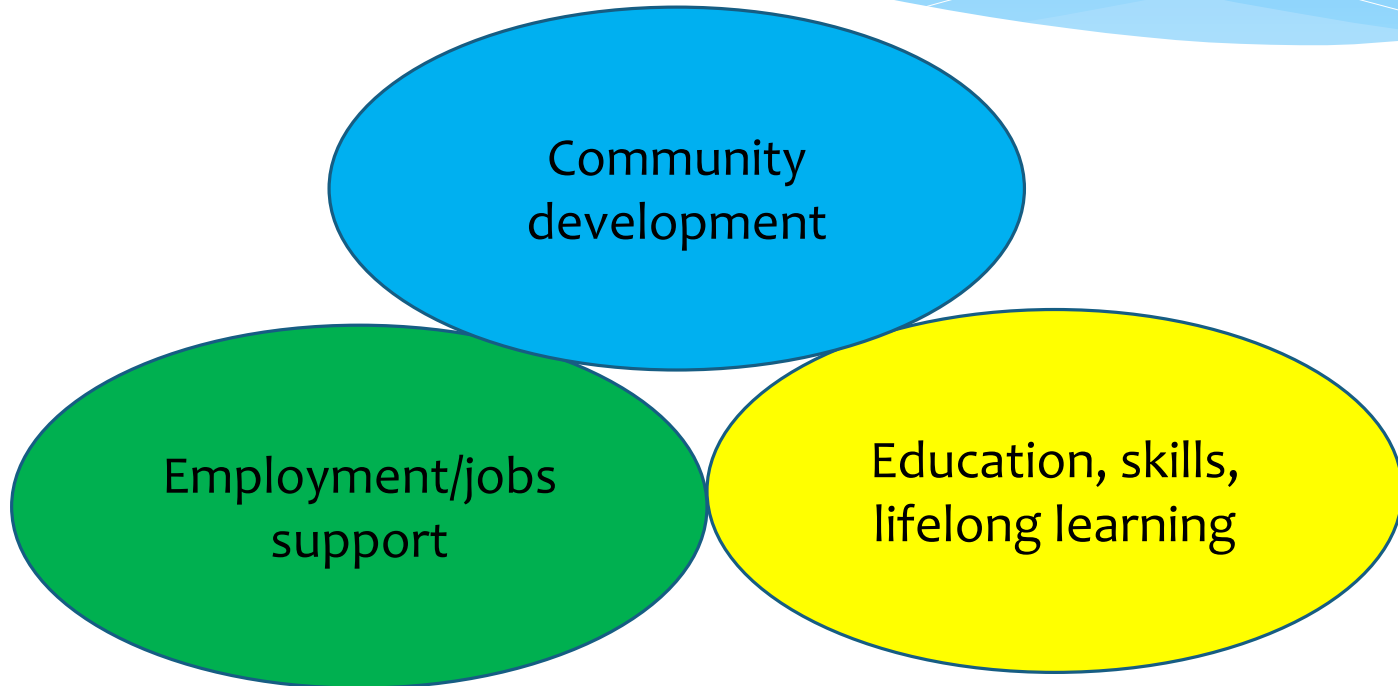
Source: CSO, QNHS



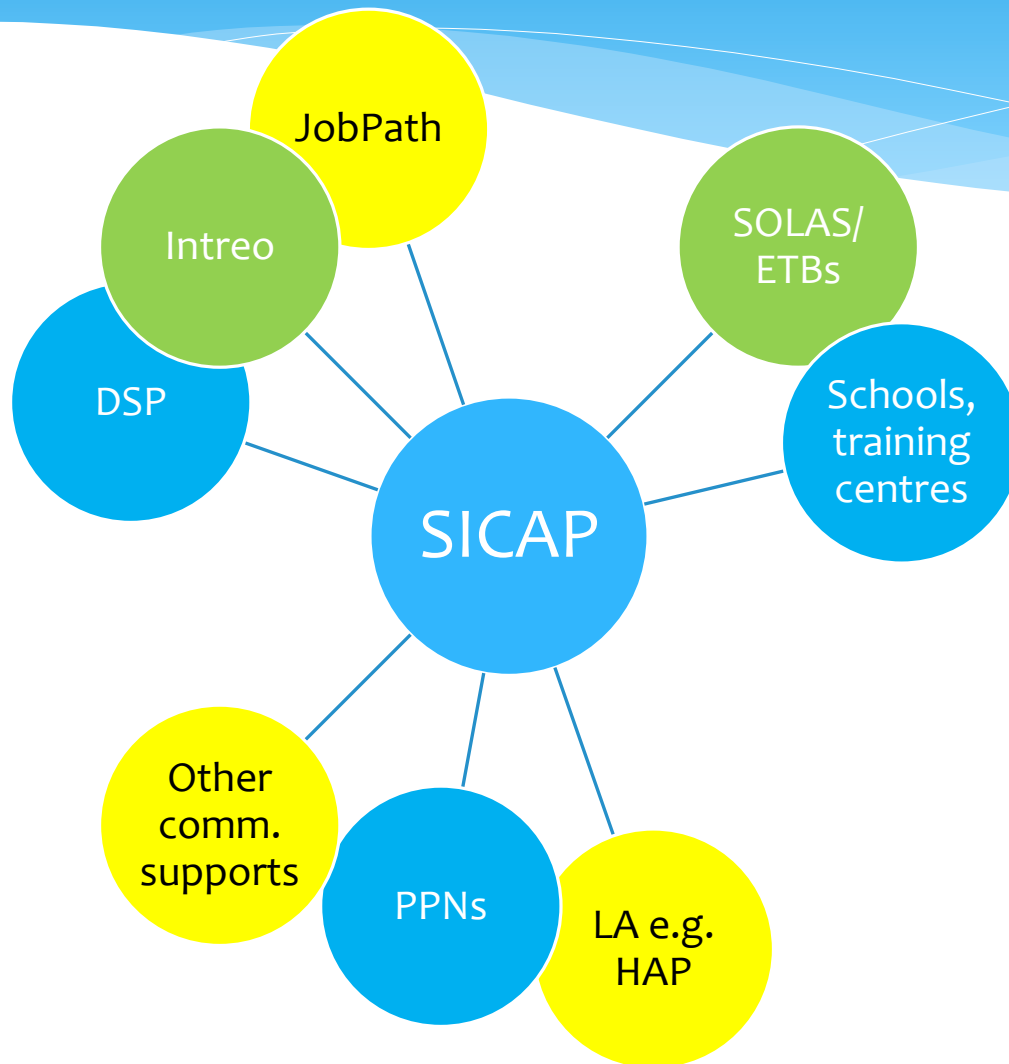
SICAP

Social Inclusion &
Community Activation
Programme

High Level Goals: 3 pronged approach



Engagement with Other State Supports



Creating an Evidence Base and Measuring Impact

- * Key part of government planning and strategies e.g. Action Plan for Jobs, Rebuilding Ireland, Pathways to Work
- * Pobal carries out indepth analysis of the programme using IRIS data (online reporting system) and qualitative data
- * Produces detailed mid year and end of year reports
- * Now have more robust, reliable and consistent data and evidence base for the programme
- * Measuring impact is critical (but not easy)
- * We have very rich data on the programme, for example...

Some Stats from 2016 on Individual Work



**Supported 47,511
individuals**

PROFILE:

- 78% were unemployed, with almost half long-term unemployed
- 70% had Leaving Certificate level or below
- 42% were from jobless households & 31% from disadvantaged areas
- Around $\frac{1}{4}$ were referred by Intreo/DSP (over twice as many as in 2015)
- 27% reported experiencing financial difficulty and 4% have housing issues

OUTCOMES:

- Almost 17,000 people participated in a lifelong learning course
- Almost 10,000 took part in labour market training
- 2,200 people got a job - most in building & construction, sales and health related
- Almost 6,000 progressed into self-employment

... and Group Work

- * 64% were area and issue-based, 17% area-based only and 19% issue focused
- * Almost 2/3rds represented people from disadvantaged areas
- * 34% were helped to take part in decision making structures either locally, regionally or nationally
- * 10% of groups progressed along the development matrix and 9% were assisted to leverage funding
- * 241 social enterprises were assisted and 7 new social businesses set up
- * Engaged with over 55,000 children through group based work



**3,076 local
community groups**



55,000 children

SICAP 2018 – 2020

- Government is committed to providing a new SICAP from 2018
- About to complete a national consultation process - Minister Catherine Byrne led out on (12 sessions)
- Programme for Partnership Government – strengthen SICAP
- Seeking to refine the programme and respond to changing policy environment and social-economic trends
- Address the challenges which have emerged in SICAP 1 e.g. targets/numbers driven, focused on individual attainment
- More flexibility to local areas whilst also ensuring national consistency and shared objectives
- More information on Pobal SICAP page - [www.pobal.ie/FundingProgrammes/Social%20Inclusion%20and%20Community%20Activation%20Programme%20\(SICAP\)/Pages/default.aspx](http://www.pobal.ie/FundingProgrammes/Social%20Inclusion%20and%20Community%20Activation%20Programme%20(SICAP)/Pages/default.aspx)



Communities Facilities Scheme

What is the CFS?

- Programme for Partnership Government commitment to develop a new Community Development Scheme in 2017
- Communities Facilities Scheme launched on 10th March 2017 by Minister Catherine Byrne
- €2m national capital grants scheme for projects in both rural and urban disadvantaged area
- Only used for capital projects e.g. office equipment, project resources, energy facilities

CFS Operating Structure

- The CFS is administered by the Local Community Development Committees and Municipal District (where in place)
- Total scheme allocation for 2017 - €2 million
- Allocation for each Local Authority - €64,500
- In general, the maximum amount per project - €1,000
- Applicant groups must be based in the administrative area of the LA where the application is submitted
- Applications closing date – 30th June 2017

Target Groups & Thematic Areas

Indicative list of groups/issues which should receive priority:

Community development projects	Projects promoting cultural activity
Ex-prisoners and families of prisoners/ex-prisoners	Projects promoting equality
Immigrants/Projects promoting integration	Refugees initiative
Older people	Travellers
Projects under Creative Ireland 2017-2022	Youth

Details online at:

www.housing.gov.ie/community/local-and-community-development/communities-facilities-scheme-form-and-guidelines

Types of Projects

The Scheme will include capital funding for projects falling under the following areas:

*Note this list is indicative but not exhaustive

- Development/renovation of community centres
- Community amenities
- Youth clubs
- Sports/recreation facilities
- Improvements to town parks and common areas and spaces



RAPID

Revitalising Areas by Planning,
Investment and Development



RAPID

- Programme for a Partnership Government commitment to launch a recast RAPID programme in 2017
- The Department is currently finalising the necessary arrangements with the intention of launching it shortly
- Modalities and timeframes to be confirmed

THANK YOU

Questions?



Ireland's European Structural and
Investment Funds Programmes
2014-2020

Co-funded by the Irish Government
and the European Union



EUROPEAN UNION

Investing in your future
European Social Fund



**An Roinn Tithíochta, Pleanála,
Pobail agus Rialtais Áitiúil**
Department of Housing, Planning,
Community and Local Government