

# Presentation to AILG on SICAP, CFS and RAPID

Presentation by Clodagh McDonnell,  
Department of Housing, Planning,  
Community and Local Government



Ireland's European Structural and  
Investment Funds Programmes  
2014-2020

Co-funded by the Irish Government  
and the European Union



EUROPEAN UNION

Investing in your future  
European Social Fund



An Roinn Tithíochta, Pleanála,  
Pobail agus Rialtais Áitiúil  
Department of Housing, Planning,  
Community and Local Government

# SICAP

Social Inclusion and Community  
Activation Programme

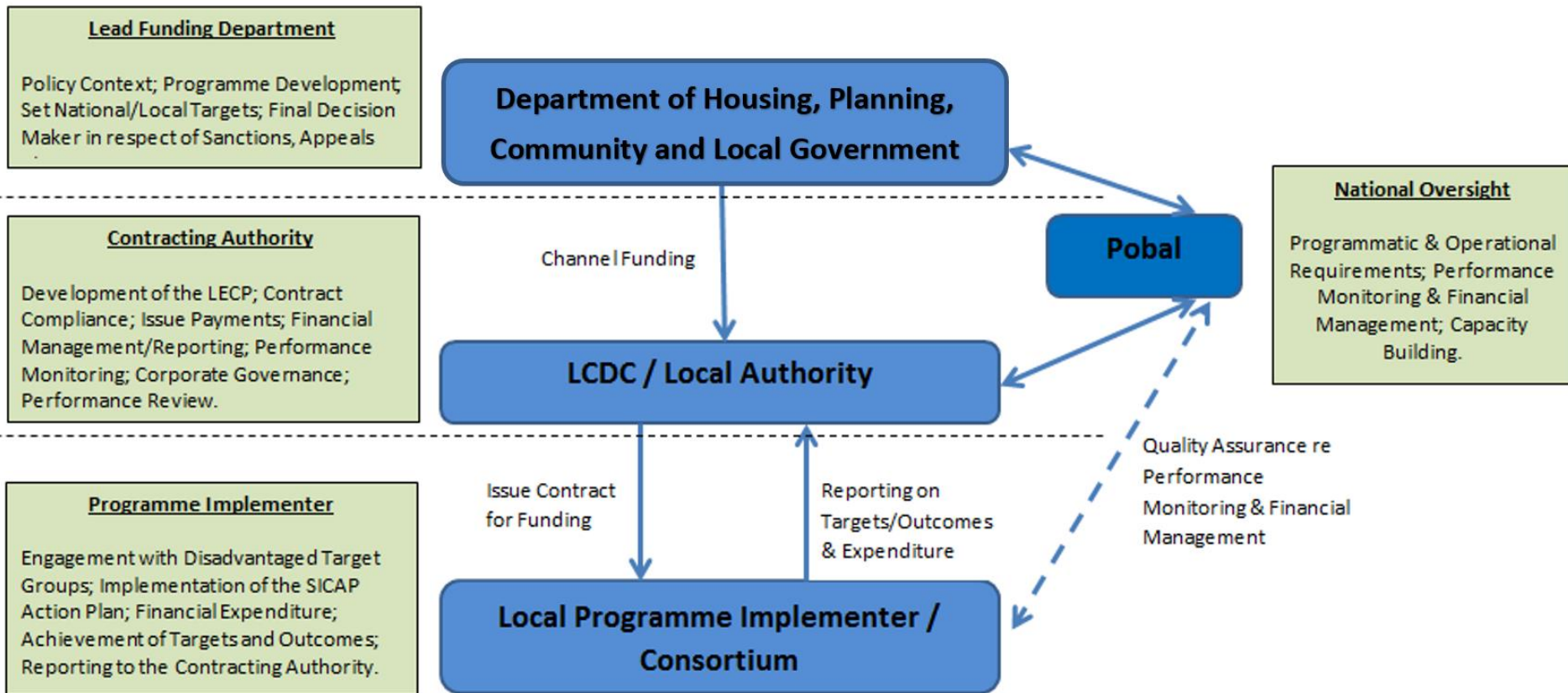
# What is SICAP?

- National Social Inclusion and Community Activation Programme.
- Successor to the Local and Community Development Programme.
- Primary social inclusion programme of Government.
- Tackle poverty, social exclusion and long-term unemployment through local engagement and partnership between disadvantaged individuals, community organisations and public sector agencies.
- Strong focus on community activation, social inclusion and community development... those most hardest to reach.
- **Budget of €37.5 - part funded by ESF/YEI.**

# SICAP – Policy Context

- Reform of Local Government
- LECP
- Strengthening the operational management, oversight and planning arrangements for local and community programmes
- Framework Policy for Local and Community Development in Ireland (Jan 2016, DECLG)

# SICAP Operating Structure



# SICAP Vision

*To improve the life chances and opportunities of those who are marginalised in society, living in poverty or in unemployment through community development approaches, targeted supports and interagency collaboration where the values of equality and inclusion are promoted and human rights are respected.*

# SICAP High Level Goals

- **Goal 1:** To support and resource **disadvantaged communities and marginalised target groups** to engage with relevant local and national stakeholders in identifying and addressing social exclusion and equality issues.
- **Goal 2:** To support individuals and marginalised target groups experiencing **educational disadvantage** so they can participate fully, engage with and progress through life-long learning opportunities through the use of community development approaches.
- **Goal 3:** To engage with **marginalised target groups/individuals** and residents of disadvantaged communities who are **unemployed** or who are not engaging with mainstream employment services to move them closer to the labour market and improve work readiness, and support them in accessing employment and self-employment and creating social enterprise opportunities.

# SICAP Target Groups

## **The SICAP target groups are:**

- Children and Families from Disadvantaged Areas
- Lone Parents
- New Communities (including Refugees/Asylum Seekers)
- People living in Disadvantaged Communities
- People with Disabilities
- Roma
- The Unemployed (including those not on the Live Register)
- Travellers
- Young Unemployed People from Disadvantaged areas
- Low Income Workers and Families



# What shaped the SICAP?

- 2013 Mid-Term Review of the LCDP.
- The OECD.
- Stakeholder consultation process.
- Focus on fewer outcomes in line with local needs and national priorities.
- Engage with the most difficult to reach
- Youth Employment Initiative (YEI) – European Social Fund, PEIL 2014-2020.
- Geographic and issue based disadvantage.
- Citizen engagement.
- Add value to public services.



**EUROPEAN UNION**

Investing in your future  
European Social Fund



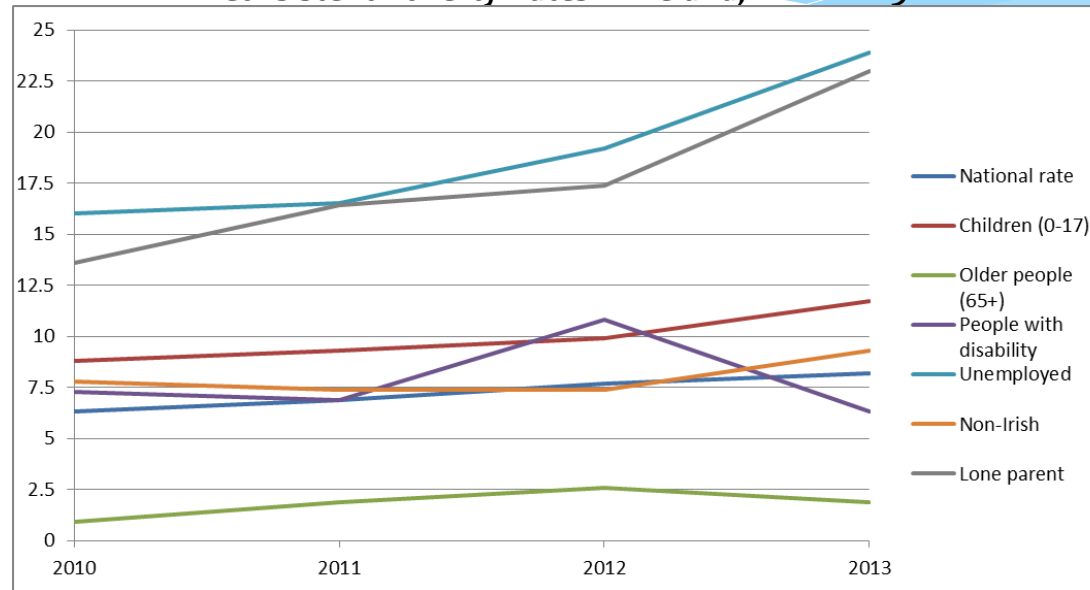
**An Roinn Tithíochta, Pleanála,  
Pobail agus Rialtais Áitiúil**  
Department of Housing, Planning,  
Community and Local Government

# Other Factors Shaping SICAP

- Consistent poverty has increased (8.2%) and remains high amongst SICAP target groups;

\*

**Consistent Poverty Rates in Ireland, 2010 - 2013**



\* DSP (2015) Social Inclusion Monitor

- Ireland has high jobless household rate – 10.8% compared to 9.1% in 2009 (NESC, 2014). The reasons behind it are complex and specific groups face greater likelihood.

# SICAP from 2018

- Government is committed to providing a new SICAP from 2018
- Minister Catherine Byrne led out on the consultation process
- Programme for Partnership Government – strengthen SICAP

# Communities Facilities Scheme (CFS)

# What is the CFS?

- Programme for a Partnership Government commitment to develop a new Community Development Scheme in 2017
- Communities Facilities Scheme launched on 10<sup>th</sup> March 2017
- Minister Catherine Byrne has responsibility for the CFS
- €2 million national capital grants scheme for projects in both rural and urban disadvantaged area

# CFS operating structure

# CFS types of projects

The Scheme will include capital funding for projects falling under the following areas, note this list is indicative but not exhaustive:

- Development/renovation of community centres
- Community amenities
- Youth clubs
- Sports/recreation facilities
- Improvements to town parks and common areas and spaces

# CFS target groups and thematic areas

Indicative list of groups or issues which should receive priority:

- Youth
- Immigrants
- Ex-prisoners and families of prisoners/ex-prisoners
- Projects promoting cultural activity
- Projects promoting equality
- Community Development projects
- Projects promoting Integration
- Projects under the Creative Ireland 2017-2022 initiative
- Older people
- Refugees



# RAPID

Revitalising Areas by Planning,  
Investment and Development

# RAPID

- Programme for a Partnership Government commitment to launch a recast RAPID programme in 2017
- The Department is currently finalising the necessary arrangements with the intention of launching it shortly
- Modalities and timeframes to be confirmed

# THANK YOU....



Ireland's European Structural and  
Investment Funds Programmes  
2014-2020

Co-funded by the Irish Government  
and the European Union



**EUROPEAN UNION**

Investing in your future  
European Social Fund



**An Roinn Tithíochta, Pleanála,  
Pobail agus Rialtais Áitiúil**  
Department of Housing, Planning,  
Community and Local Government